

Bestehend



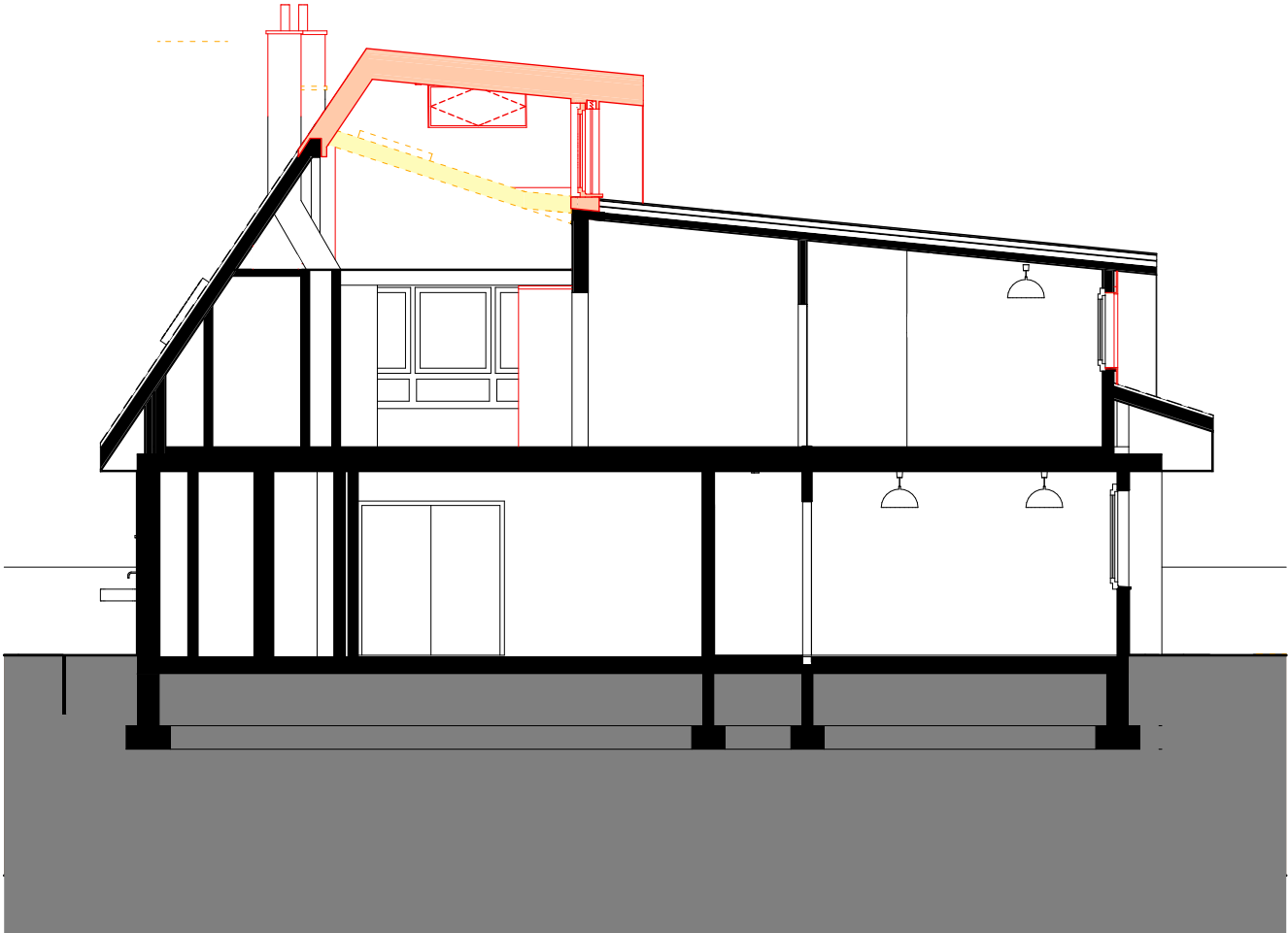
Neu



Abbruch



Querschnitt A-A



Bestehend



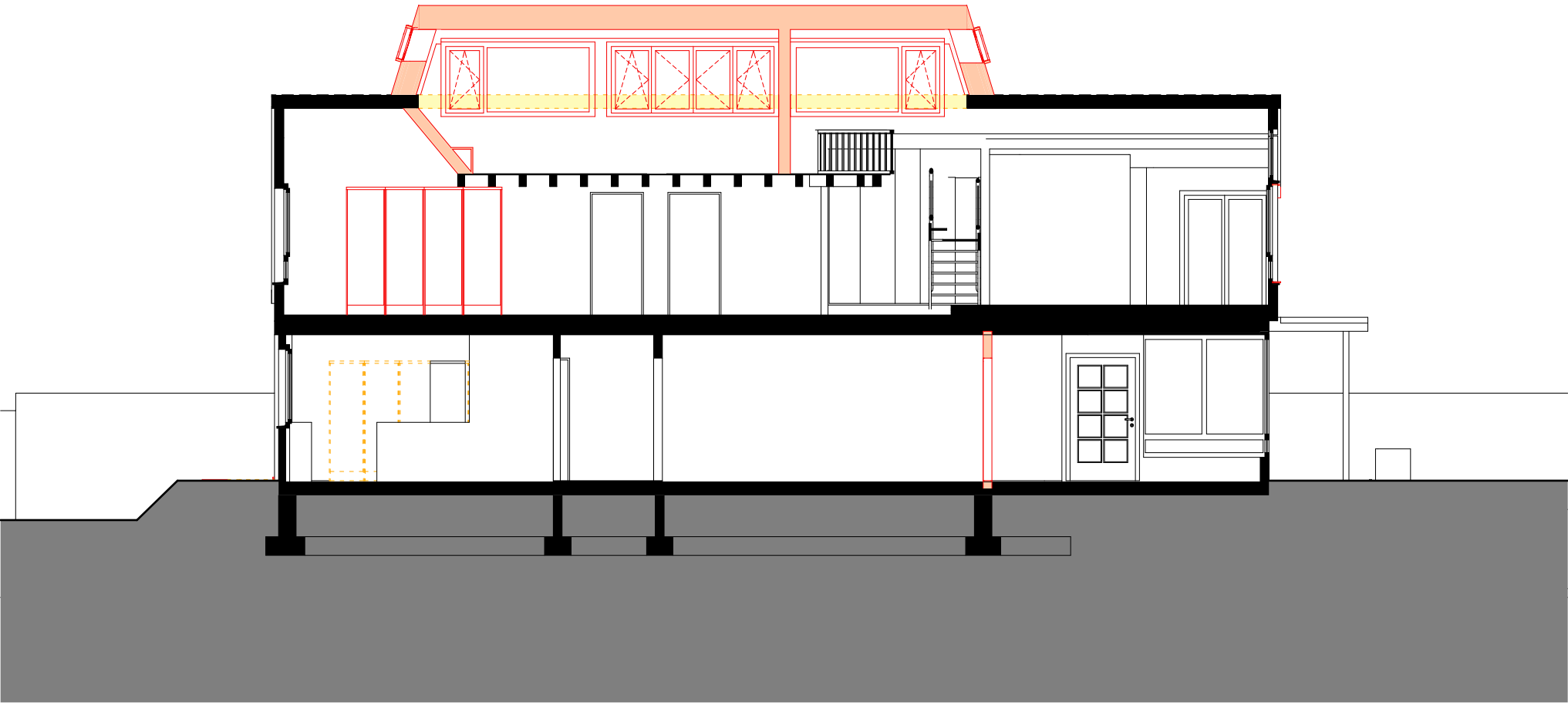
Neu



Abbruch



Längsschnitt B-B



Bestehend

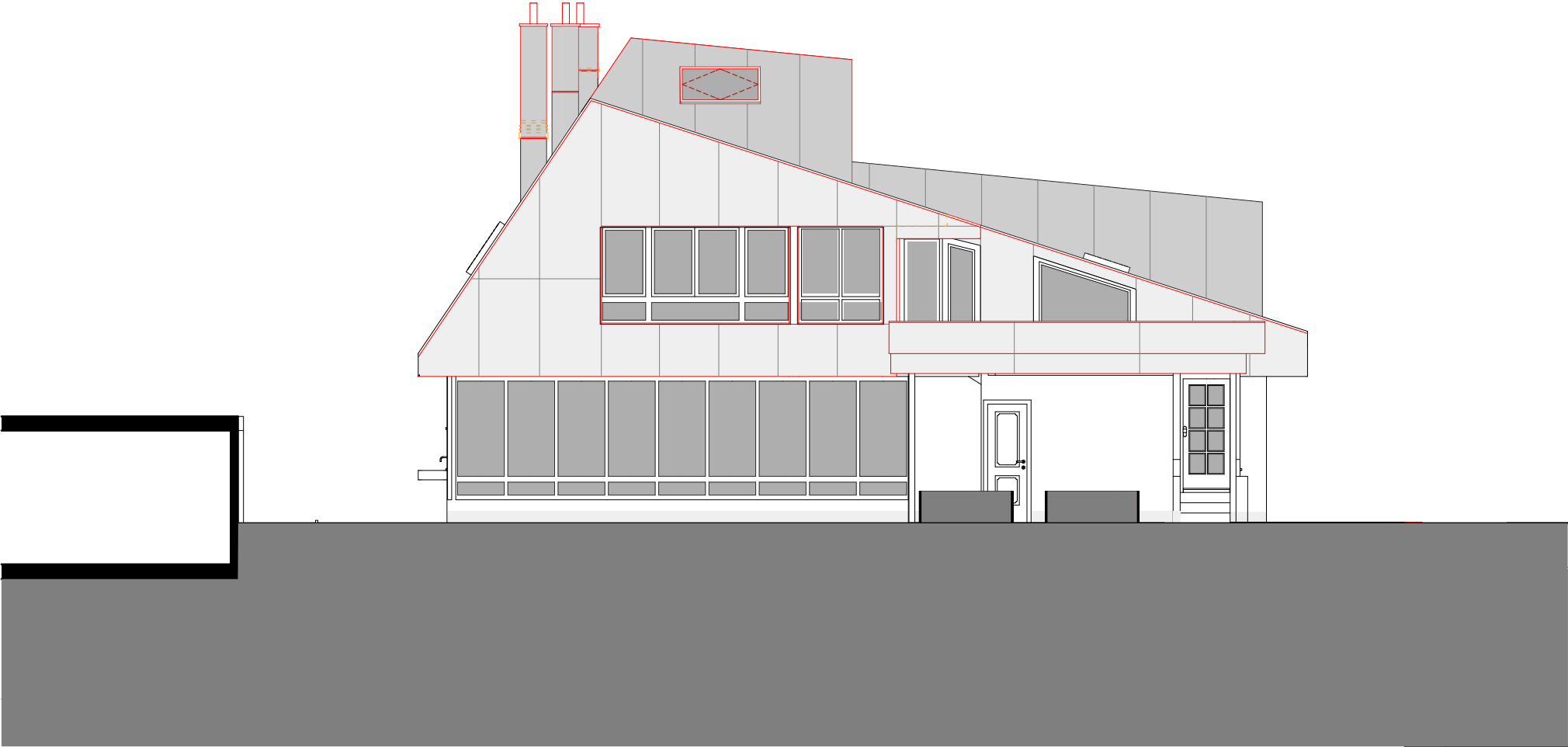


Neu



Abbruch





Bestehend



Neu



Abbruch





Bestehend

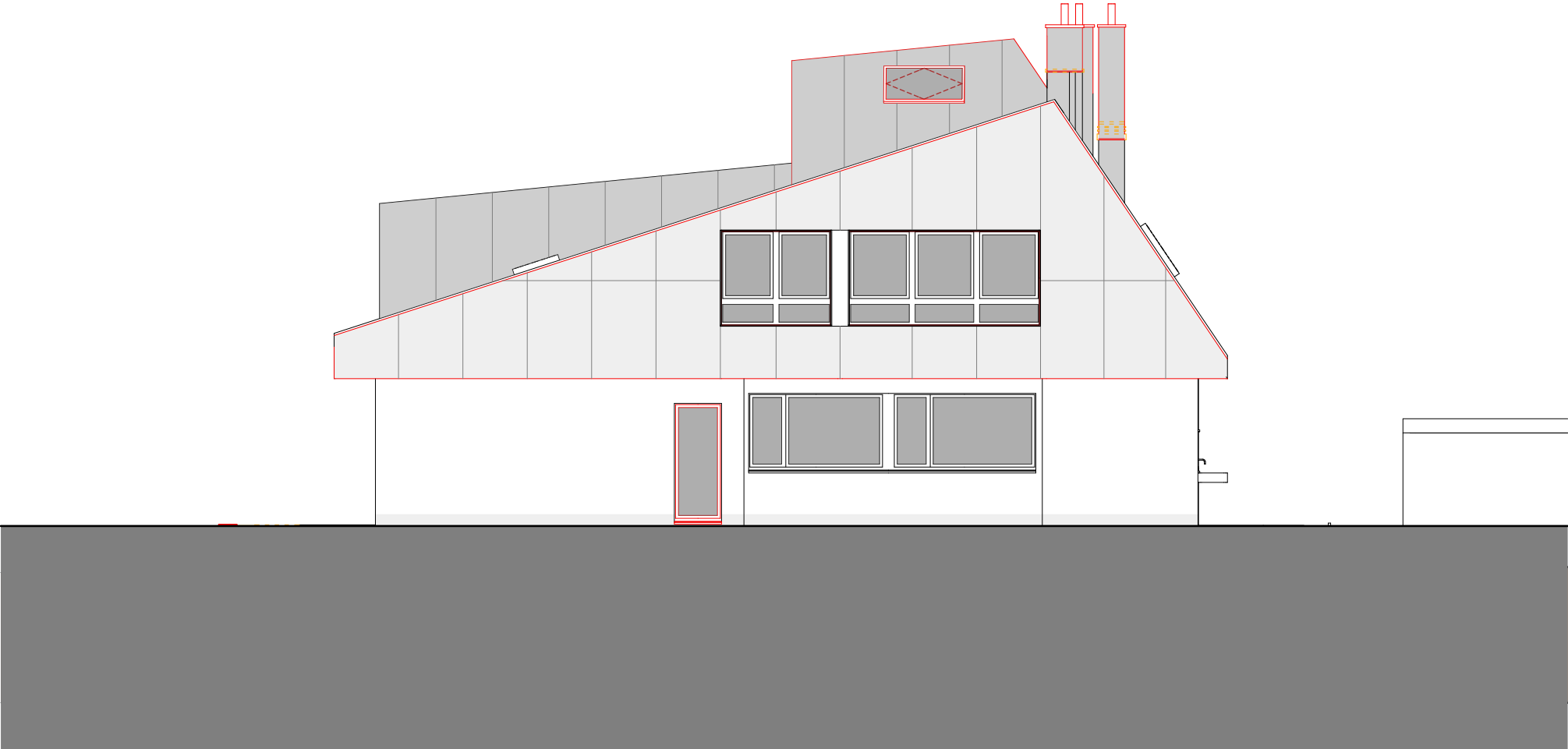


Neu



Abbruch





Bestehend



Neu



Abbruch





Bestehend



Neu



Abbruch

